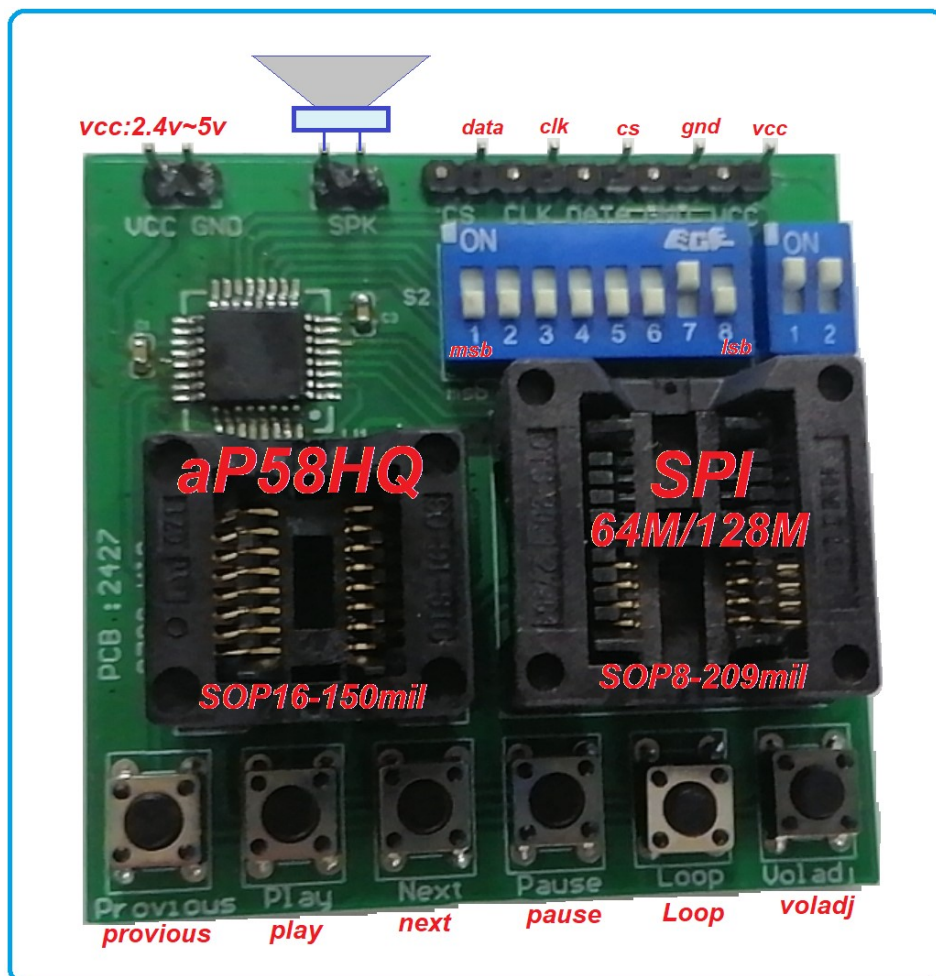
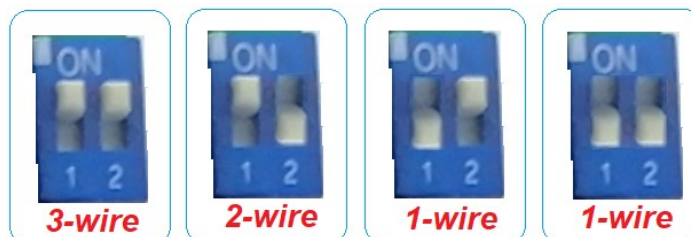


## **aP58QM-KIS16 user manual**

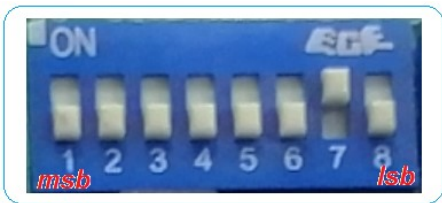
- Part no. : Q7Q8 KIS
- Pcb no. : 2427
- Pcb size : 55 x 54 mm
- VCC : 2.4V ~ 5.0V
- Support cpu : 1-wire , 2-wire , 3-wire cpu serial mode



- Serial mode options :



**Command :**

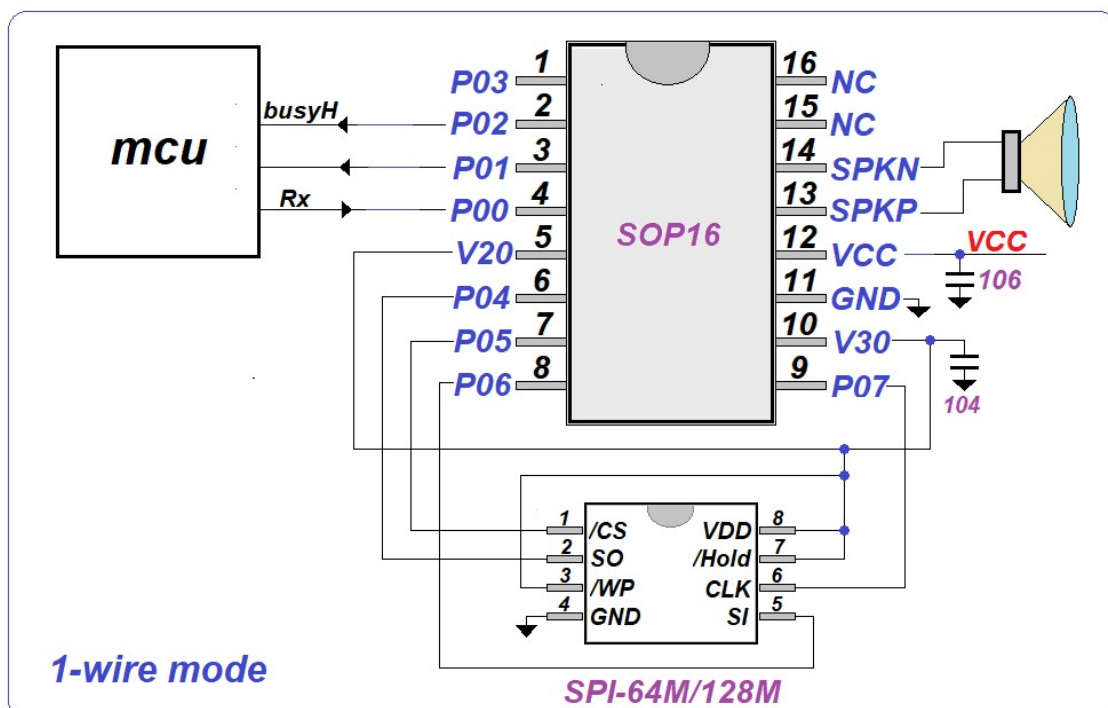
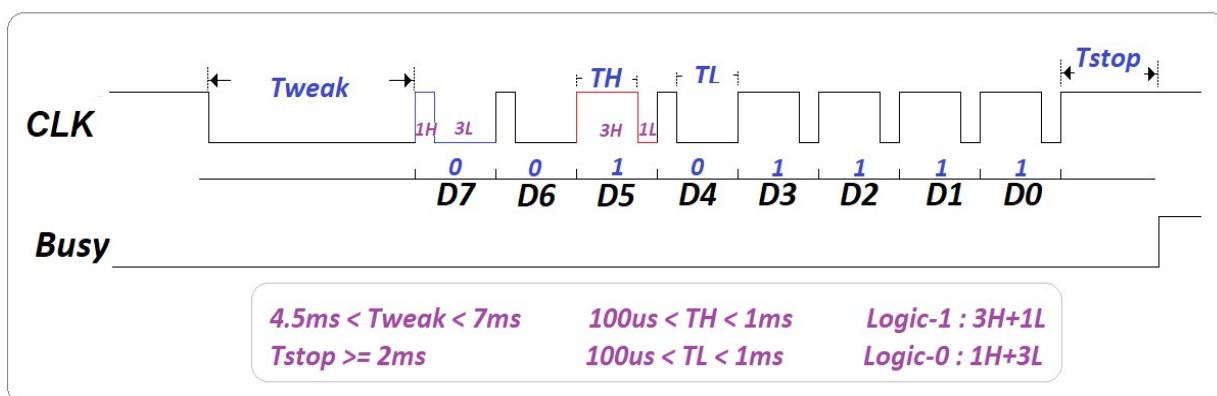
command	D7	D6	D5	D4	D3	D2	D1	D0
<b>Play Previous</b> [ Previous key ]	<b>FD</b>							
	$s3 \rightarrow s2 \rightarrow s1 \rightarrow sn \rightarrow sn-1 \rightarrow sn-2 \rightarrow \dots \dots s2 \rightarrow s1 \rightarrow sn \rightarrow sn-1 \rightarrow \dots \dots$							
<b>play sentence(n)</b> [ play key ]	<b>01 ~DF</b>							
	 <b>address[02]: 0000-0010</b>							
<b>Play Next</b> [ Next key ]	<b>FC</b>							
	$s1 \rightarrow s2 \rightarrow s3 \rightarrow s4 \rightarrow s5 \rightarrow \dots \dots sn \rightarrow s1 \rightarrow s2 \rightarrow \dots \dots$							
<b>Pause / Resume</b> [ Pause key ]	<b>FE</b>							
	<b>Pause / resume</b>							
<b>repeat off</b>	<b>F8</b>							
<b>repeat on</b> [ Loop key ]	<b>F9</b>							
	<b>Repeat on / repeat off [ on/off ]</b>							
<b>set volume (n)</b> [ voladj key ]	<b>0E</b>							
	$vol6 \rightarrow vol5 \rightarrow vol4 \rightarrow vol3 \rightarrow vol2 \rightarrow vol1 \rightarrow vol2 \rightarrow vol3 \rightarrow vol4 \rightarrow vol5$ $\rightarrow vol6 \rightarrow vol1 \rightarrow vol2 \rightarrow vol3 \rightarrow \dots \dots$ <b>Vol6=15 , vol5=12 , vol4=9 , vol3=6 , vol2=3 , vol1=1</b>							

## 1. 1-wire mode :

P00	P01	P02	P03
Rx	Out	Out	Out/Reset

Out option : busyH , busyL , 3Hz , 6Hz , LED-dyna , stopH , stopL

P03 = input- reset (option)

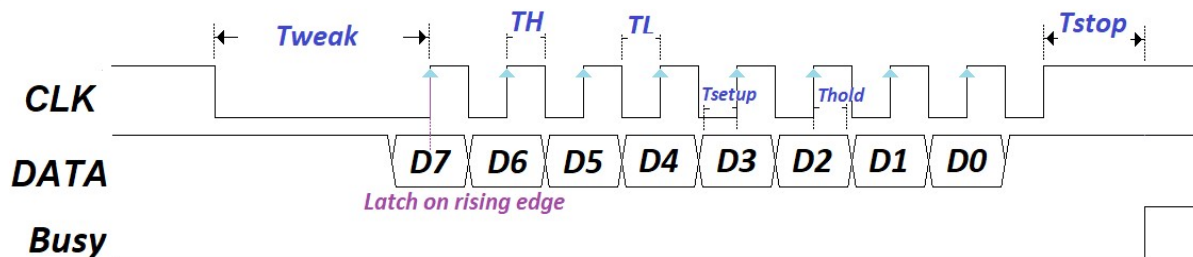


## 2. 2-wire mode :

<b><i>P00</i></b>	<b><i>P01</i></b>	<b><i>P02</i></b>	<b><i>P03</i></b>
<b><i>sdata</i></b>	<b><i>sclk</i></b>	<b><i>Out</i></b>	<b><i>Out/Reset</i></b>

**Out option : busyH , busyL , 3Hz , 6Hz , LED-dyna , stopH , stopL**

***P03 = input- reset (option)***



**4.5ms < Tweak < 7ms**

$T_{stop} > 2ms$

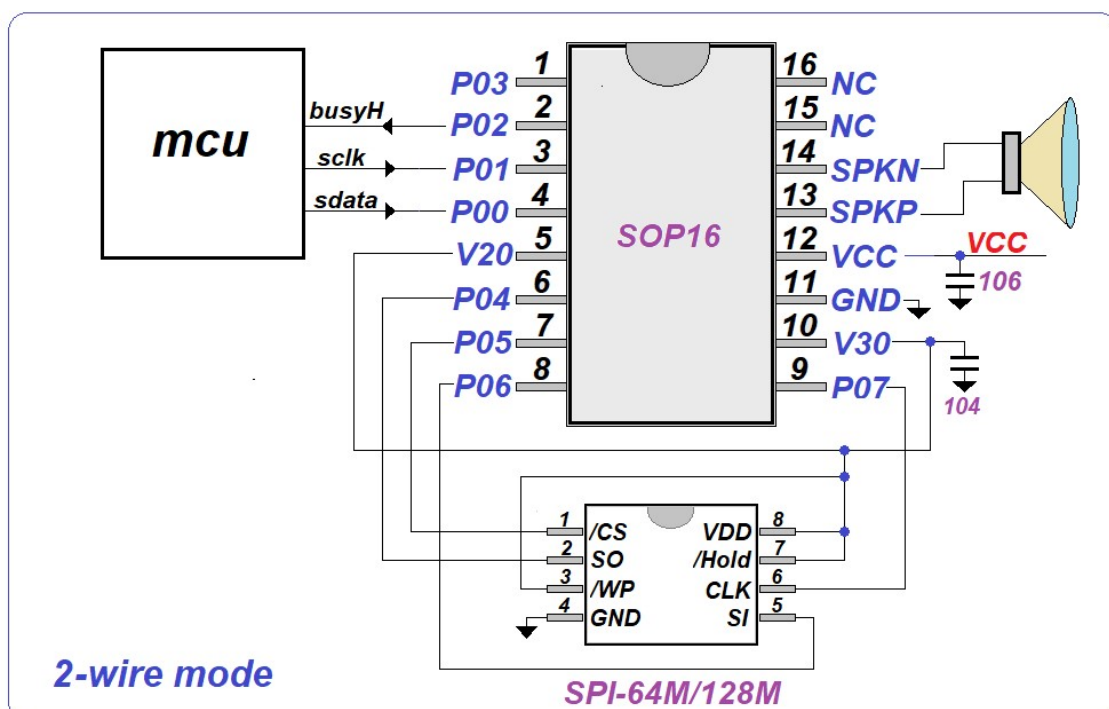
$TH > 80\mu s$

$TL > 80\mu s$

$$160\mu s < TH+TL < 2ms$$

$T_{setup} > 50\mu s$

*Thold* > 50us

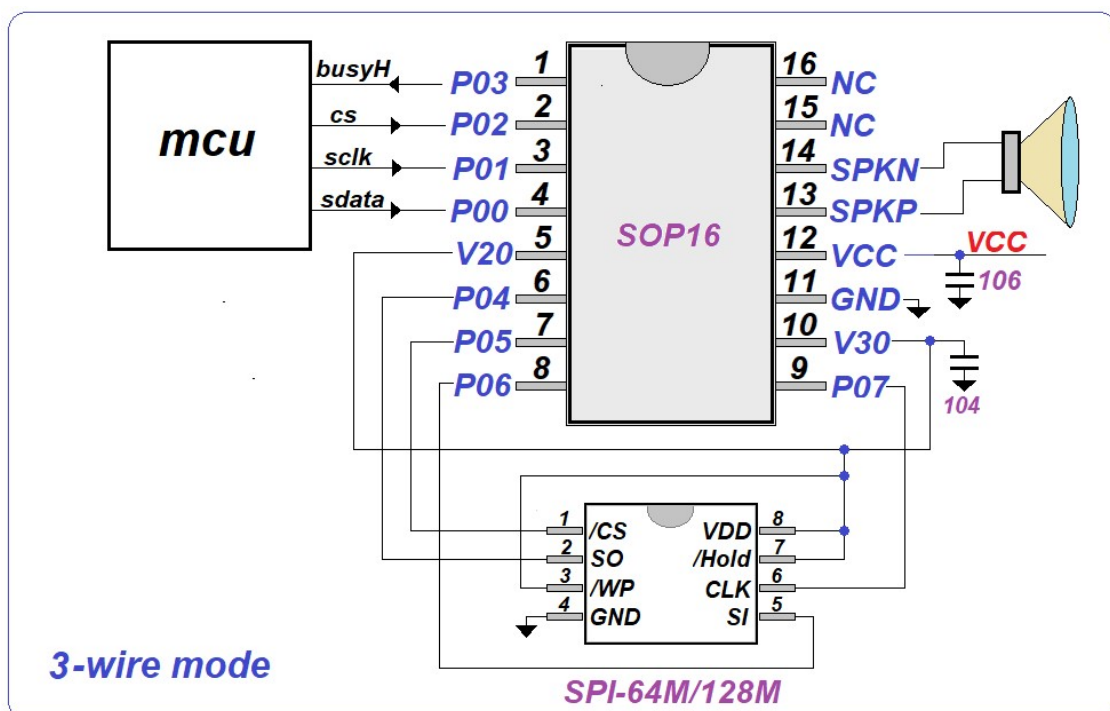
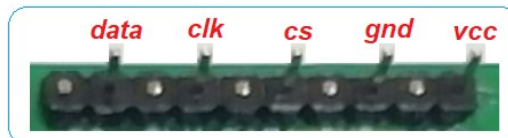
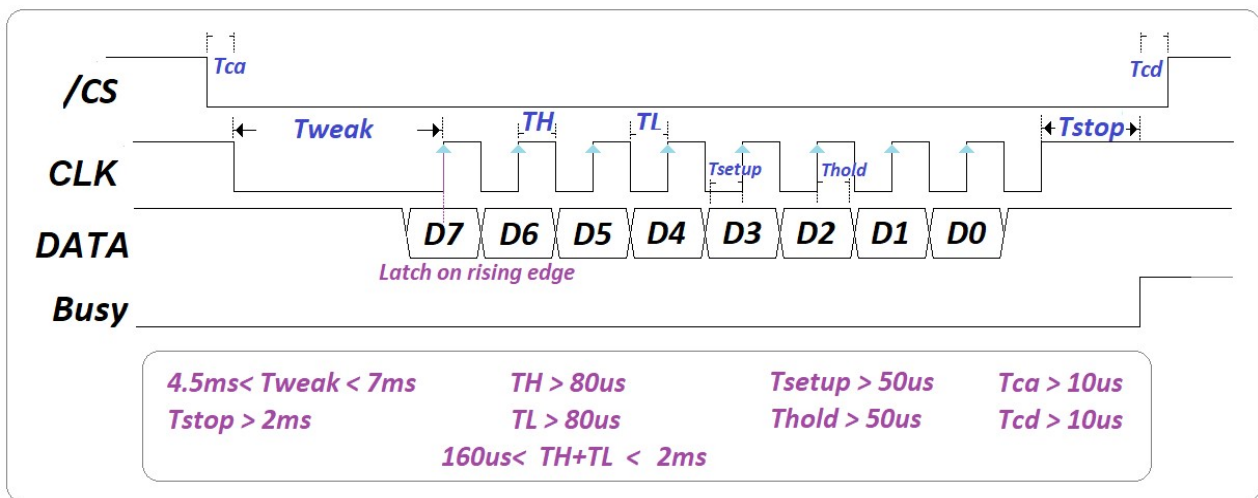


### 3. 3-wire mode :

P00	P01	P02	P03
sdata	sclk	Cs	Out/Reset

Out option : busyH , busyL , 3Hz , 6Hz , LED-dyna , stopH , stopL

P03 = input- reset (option)



---

---

21 OCT 2024

aP58QM-KIS16 user manual.

---

---